



Newsletter No.3 – May 2017

Kia Ora Families and Whanau

This is just a short newsletter to ensure you are aware of some events and their dates for your calendar. ☺

Nga mihi nui ki a koutou.

Best wishes to you all.

Denise (Head Teacher), Josanne, Michelle, Alison, Nicky, Sally and Fiona (Teachers) and Kath (Administrator)

Staff Professional Learning and Development Wednesday 24 May – 2:00pm Closure

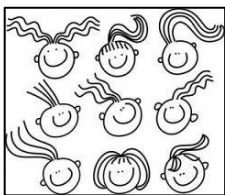
The Centre will close at 2:00pm on Wednesday 24 May so that staff can attend professional development on speech and language. We regularly work with children, families and at times Speech and Language Therapists on this aspect of children's development. Thanks for your understanding in allowing all staff to attend this together. Sorry for any inconvenience this may cause.

St John Visit Wednesday 31 May – 2:00pm

A St John representative will come and speak to the children about the St John service and how St John can help them. **A gold coin donation per child would be appreciated – thank you. All welcome.**



Wacky Hair Week and Wig Wednesday (for the Child Cancer Foundation) 20, 21, 22 June



Please send your child along with a wacky hair-do or wig on Tuesday, Wednesday and Thursday of the week 20-22 June. If you run short of time or creativity on the day, we are happy to do a hair creation for your child here at the Centre. A donation popped into the Child Cancer Foundation box would be most appreciated.



Lantern Festival Friday 7 July

This is one of our annual family events. It involves making a lantern in the weeks leading up to the Lantern Festival, and then on the evening of Friday 7 July; a simple meal, a reading of the story "Martin the Cobbler" in the lantern-lit church, then a walk around the streets of Tapanui with our lanterns.



PJ and Movie Days 8, 9, 10 August



This fun week celebrates the humble pyjama, and includes watching a movie in the middle of winter. If you have any short movies that you think the children would love, please let Denise know. The children can come to KidzWay dressed in their pyjamas. Please pack their usual day clothes too, should they want to change.



Snow Procedure

Please make yourself familiar with the attached Snow Procedure, should the Centre need to be closed due to snow.

School-Links



Further to the Snow Procedures mentioned above, the School-Links Emergency App is one of the methods we use to communicate with parents during emergencies such as snow closures and earthquakes. School-Links enables us to quickly send information and updates to all our families in a bulk text.

